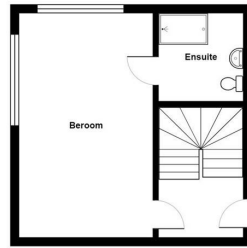




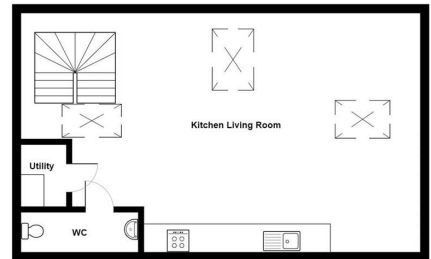
Meadow House | Ashwood Park | Ashwood Way | RG23 8DQ

£1,235 PCM

Waterfords
Residential Sales & Lettings



Total Area: 1108 ft² ... 103.0 m²



Energy Efficiency Rating		
	Current	Potential
Very energy efficient - lower running costs		
(92 plus) A		
(81-91) B		
(69-80) C		
(55-68) D	57	57
(39-54) E		
(21-38) F		
(1-20) G		
Not energy efficient - higher running costs		
England & Wales	EU Directive 2002/91/EC	



Description

Nestled in the charming area of Meadow, Basingstoke, this modern one-bedroom apartment in Ashwood Park presents an excellent opportunity for those seeking a comfortable and contemporary living space. Available from March, this delightful property features a well-appointed reception room that offers a welcoming atmosphere, perfect for relaxation or entertaining guests.

The apartment boasts a spacious bedroom, providing a serene retreat for rest and rejuvenation. The bathroom is designed with modern fixtures, ensuring both style and functionality. With a focus on contemporary living, this apartment is ideal for individuals or couples looking for a stylish home.

Key features

- One Bedroom Duplex Apartment to rent
- Water & electric separately metered
- Intergrated fridge freezer, dishwasher, ceramic hob & electric oven
- EPC D Council Tax Band B
- Minimum Term 12 Month Let
- Combination blinds partial or full black-out
- Lightning fast Fibre Broadband plus TV, telephone & Sky Q points.
- LED mirror with shaver socket & demister function
- Onsite parking included in the rent
- Available March 2025



39 The Hart Centre
Fleet
Hampshire
GU51 3LA
01252 623330

hampshirelettings@waterfords.co.uk
<https://www.waterfords.co.uk/>